

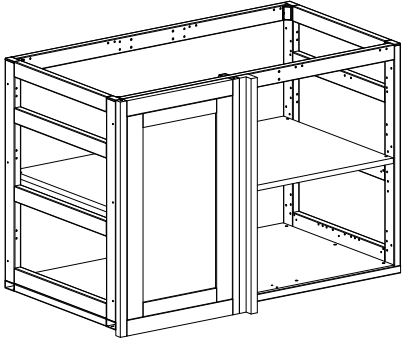
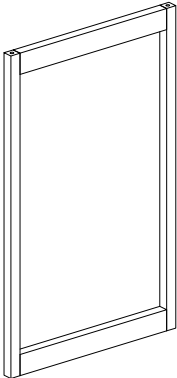
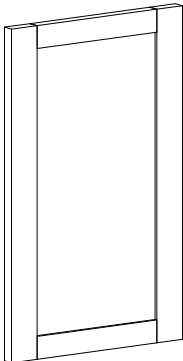
ASSEMBLY INSTRUCTIONS FOR BLIND CORNER CABINET 18" BACK ACCESS DOOR FRAME



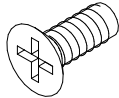
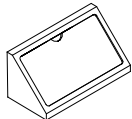
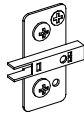
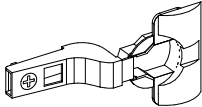
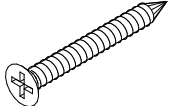
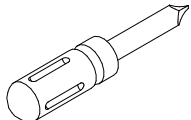
Thank you for choosing Pacific Teak Millworks outdoor cabinetry! You have selected the most beautiful, finest quality outdoor living cabinetry available. Properly installed and cared for, your teak cabinetry will provide a lifetime of beauty, enjoyment and flawless operation for your new outdoor living area.

CONTENTS:

Cabinet Components:

No	Item
1	 <p>Cabinet Frame: <i>Sold Separately</i></p>
2	 <p>18" Back Access Door Frame: 1 ea.</p>
3	 <p>16" Cabinet Door: <i>Purchase Separately</i></p>

Assembly Hardware:

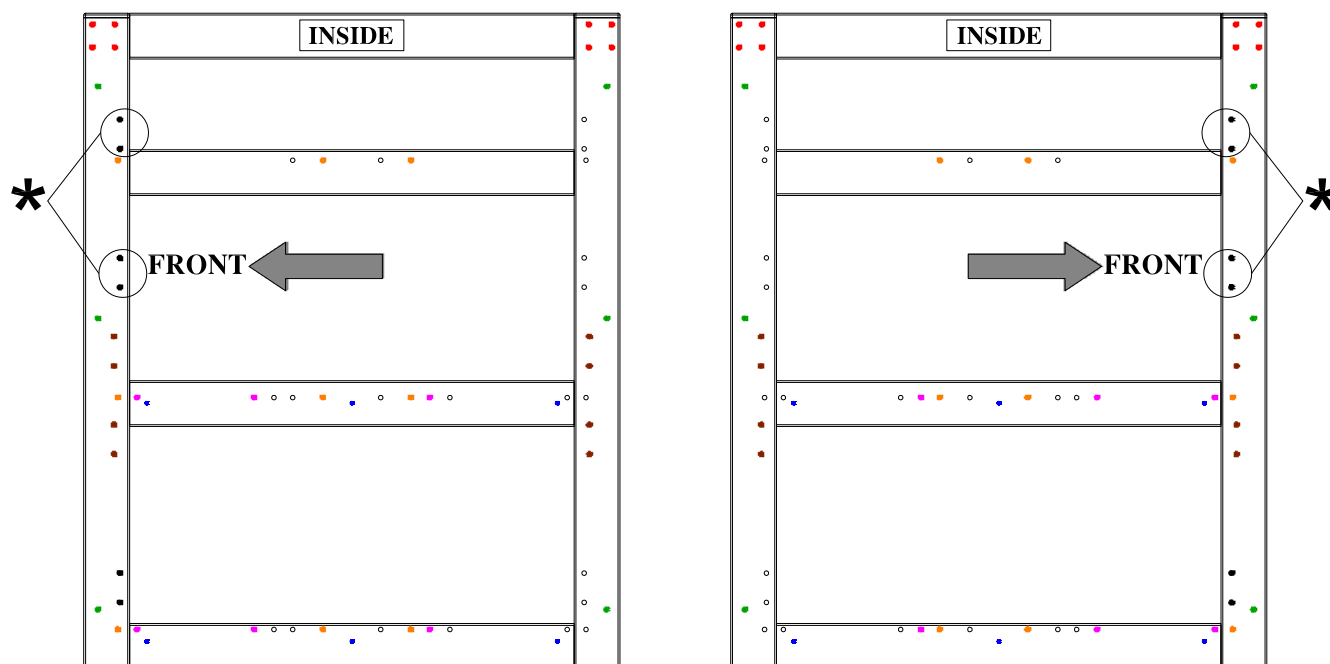
Code	Item
A	 <p>Euro Screw: M6 x 11mm. 8 ea.</p>
B	 <p>SISO Corner Bracket: 2 ea.</p>
C	 <p>Blum® Clip Top Hinge Plate: 2 ea.</p>
D	 <p>Blum® Clip Top Blumotion Hinge: 2 ea.</p>
E	 <p>FCB Screw: M4 x 40mm: 2 ea.</p>
F	 <p>Phillips Head Screwdriver: <i>Not included</i></p>

Before you begin.

- Please read these instructions completely and thoroughly before you begin assembly and installation.
- Pacific Teak Millworks outdoor cabinetry must be installed by an experienced cabinet installer.
- If your cabinets will be installed with a barbeque grill or other cooking appliances, consult the appliance manufacturer's instructions regarding "Clearances to Combustibles". An insulated liner may be required.
- Note that all holes needed for normal cabinet assembly are precisely located during the CAD fabrication processes, and no drilling is generally required. We recommend using standard hand tools for assembly to prevent damage. If using power tools to assemble cabinets, be sure to adjust the force to the lightest possible setting. Overtightening could strip the screws, aluminum cabinet components, or damage the plastic SISO corner brackets.

! WARNING: Drilling, sawing, sanding or machining wood products can expose you to wood dust, a substance known to the State of California to cause cancer. Avoid inhaling wood dust or use a dust mask or other safeguards for personal protection. For more information go to: www.P65Warnings.ca.gov/wood.

Cabinet Frame Side Hole Matrix:



● Hole Siso Corner Fix

● Hole Connector HÄFELE Conformat PZ2 drill.gal. 5x38mm

● Hole BLUM Clip mounting plate

● Hole Shelf

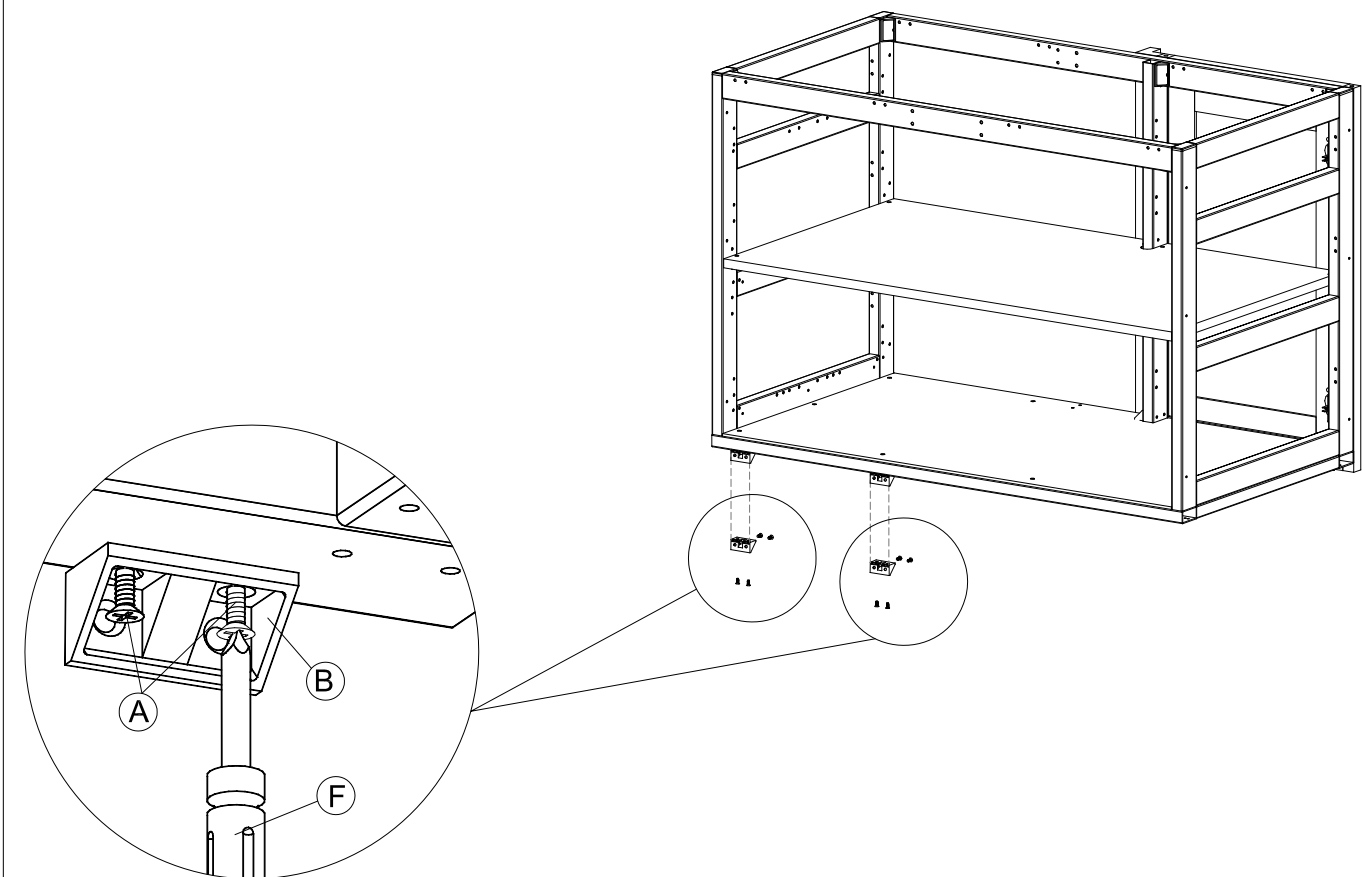
● Hole Panel Drawer

● Hole Drawer Roll Out Tray

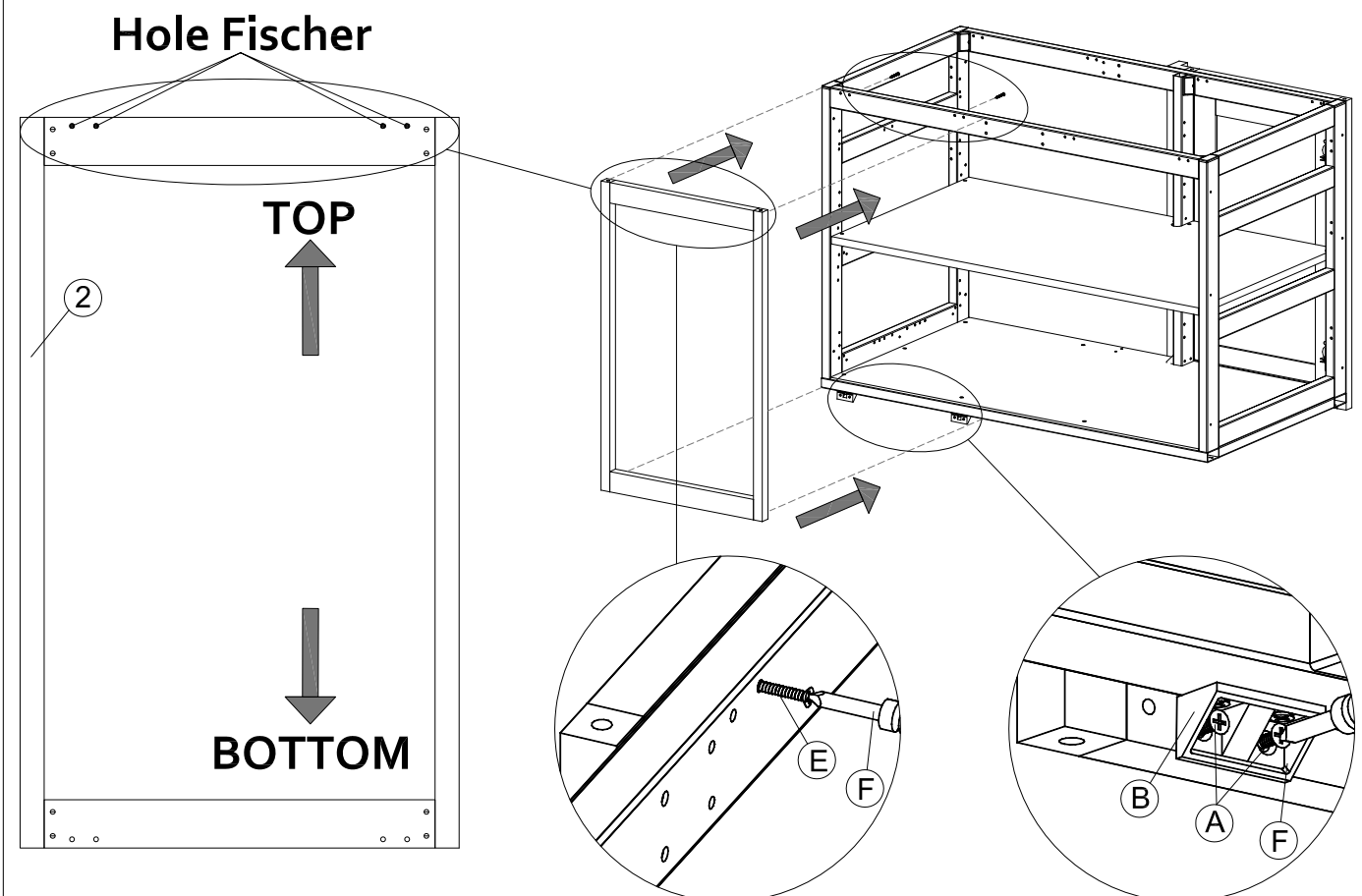
● Hole Drawer Bloc Upper & Bottom

* Can be used for door stop on 13" & 18" door chassis

Step 1. Install Corner Bracket



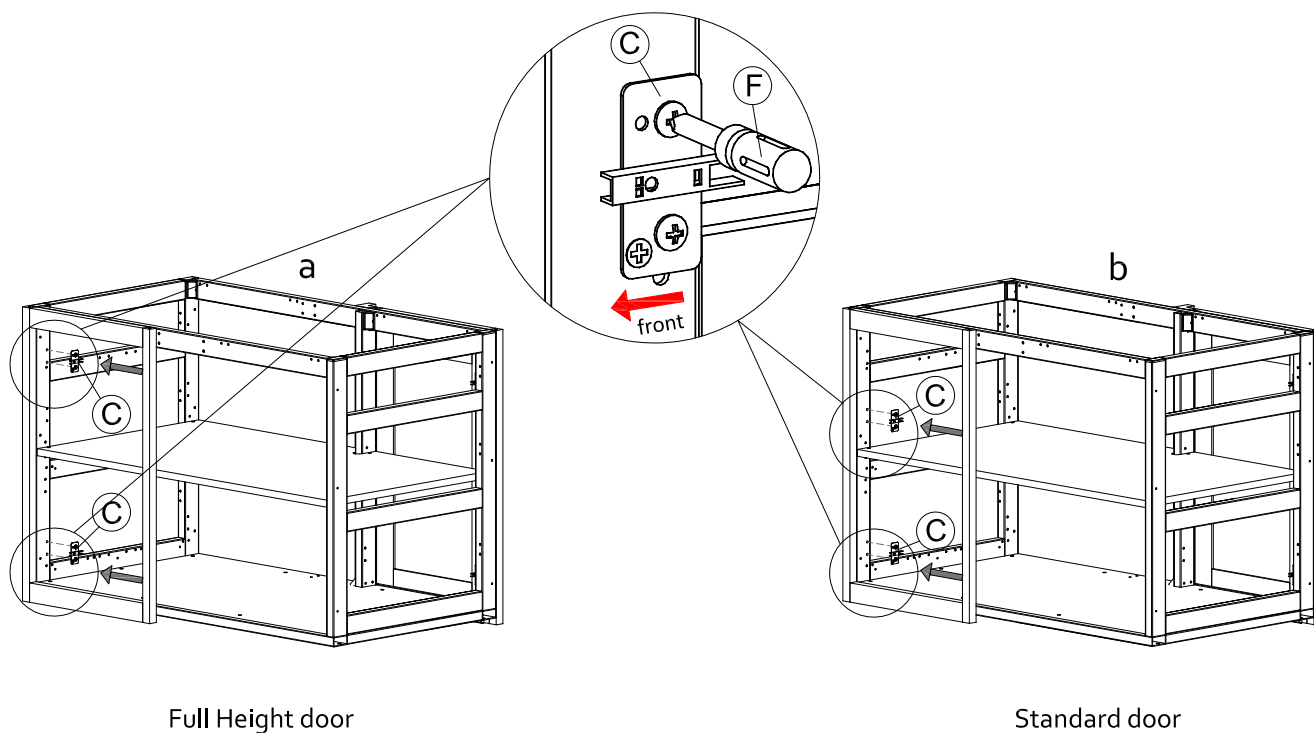
Step 2. Install Back Access Door Frame



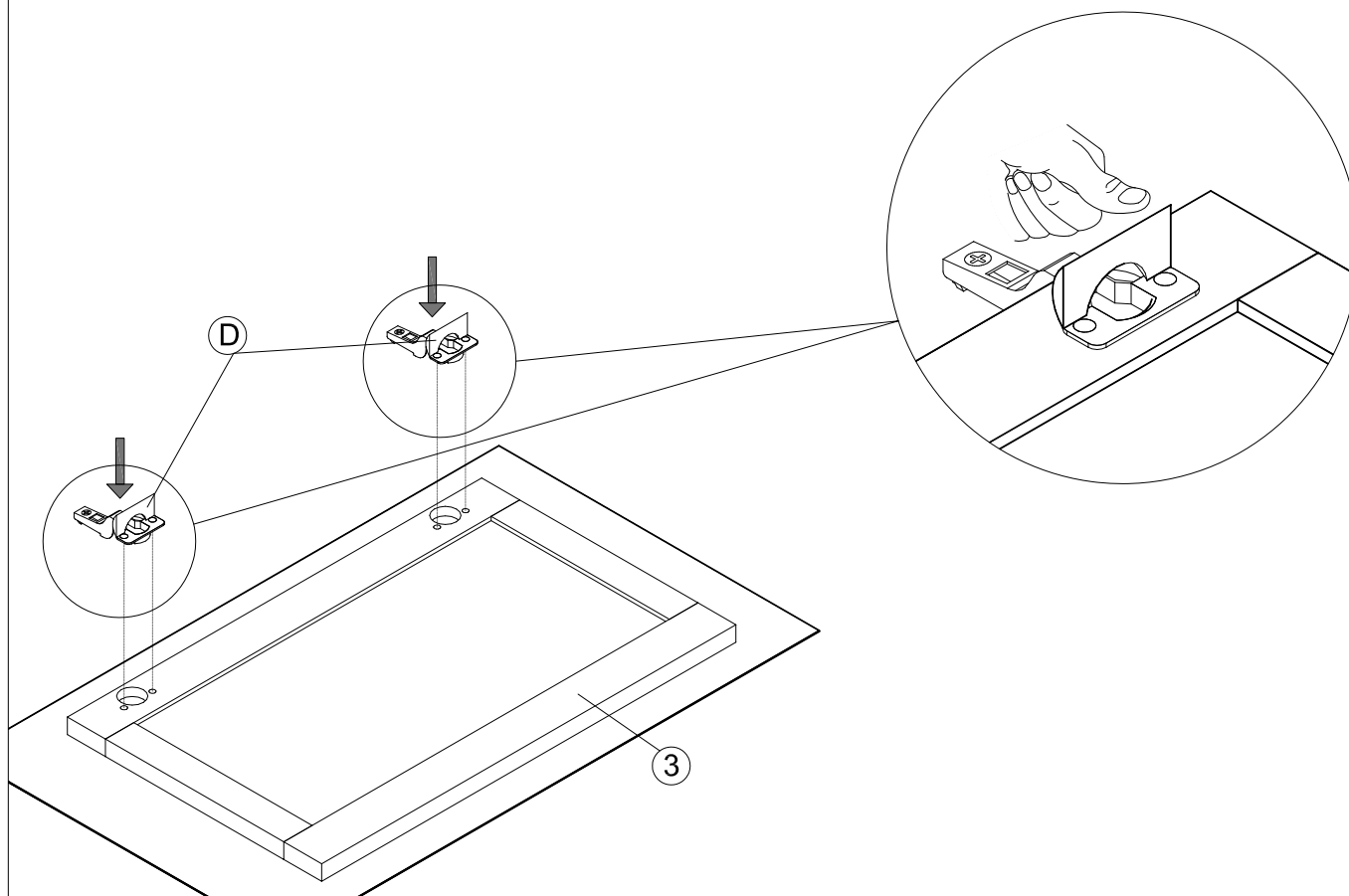
Step 3. Install Hinge Plates

Note: Holes are provided for both left, and right-side hinge operation.

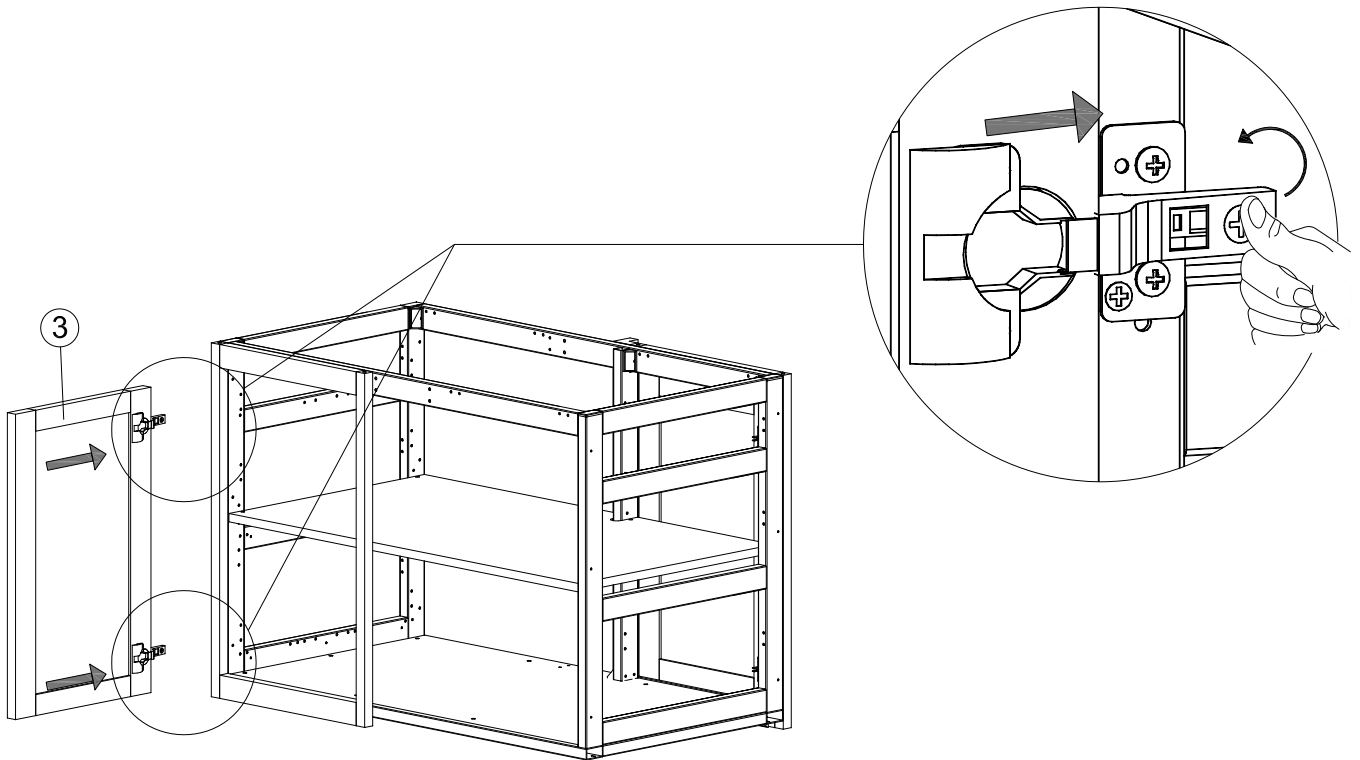
Note: If using a full height (26" high) door, install the upper hinge plate at location "a". If you are installing a drawer or false drawer with a standard (20" high) door, install the upper hinge plate at location "b".



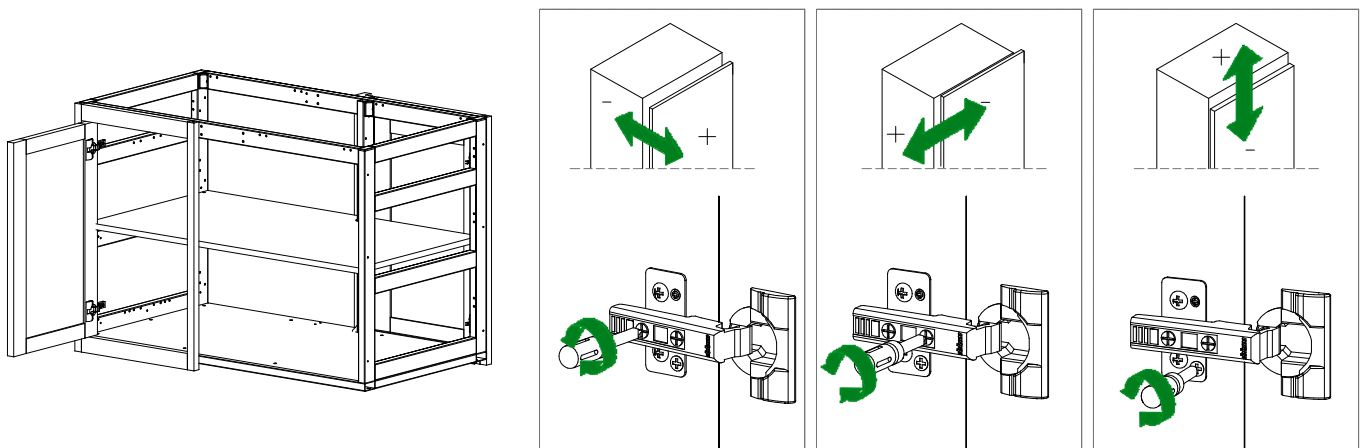
Step 4. Install Hinges On Door (Sold Separately)



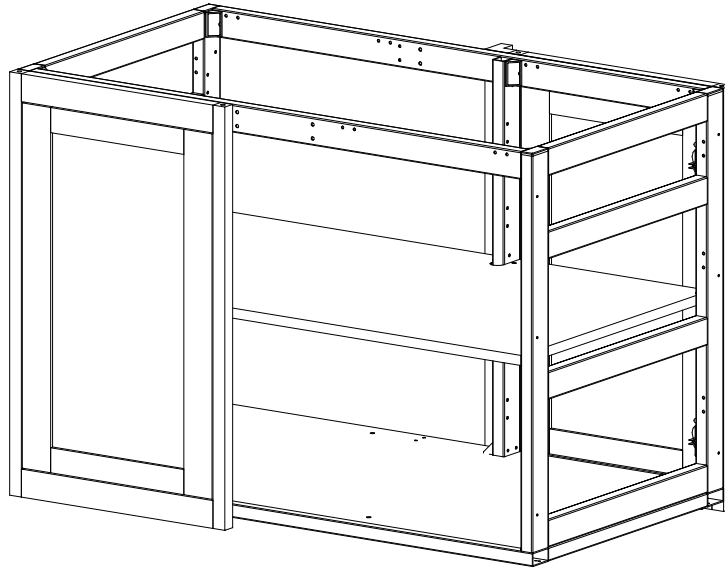
Step 5. Install Door



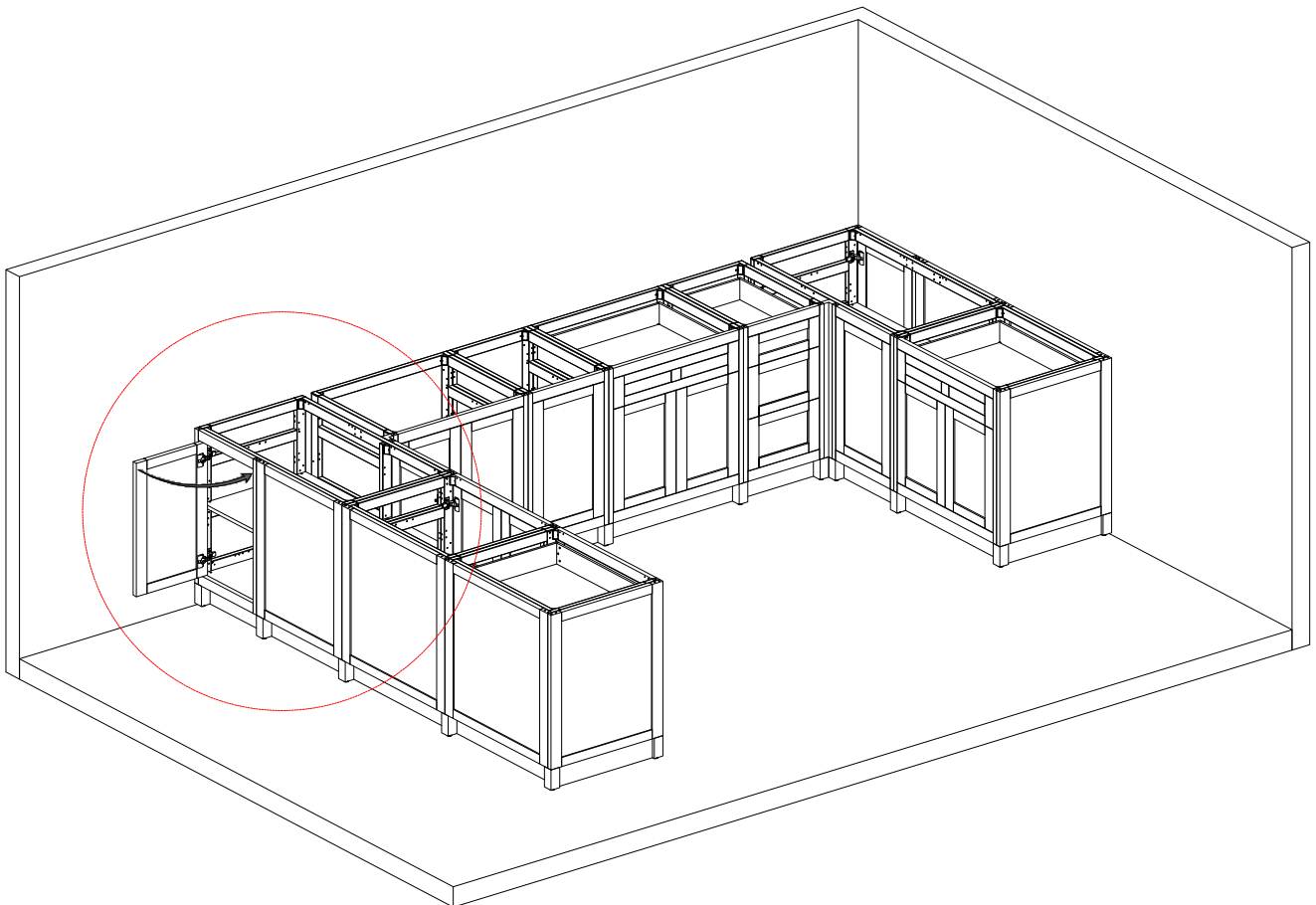
Step 6. Door Adjustment



Step 7.



Step 8.



Pacific Teak
MILLWORKS

33951 Valencia Place
Dana Point, CA 92629
info@pacificteakmillworks.com
www.pacificteakmillworks.com